

Quick Online Classroom Controls in Adobe Connect

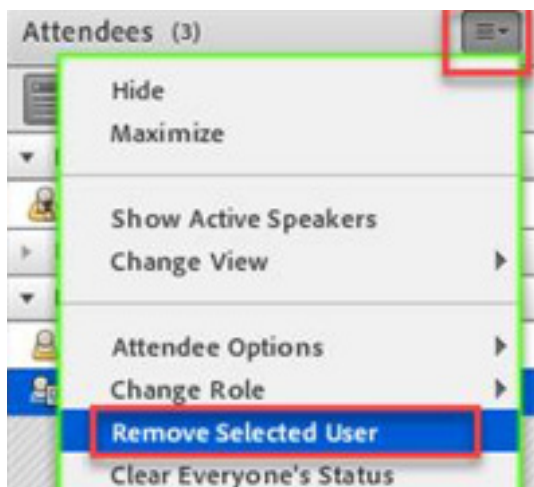
- Remove/eject a student from the session
- Block students from re-joining the session
- Hide the Chat pod and use Q & A pod as moderated communication from students
- Move Attendees pod to the Presenter Only Area
- Disable student's microphone, webcam, markup draw tools

Remove Student(s) From Session

The eject/remove option for Adobe Connect is part of the Attendees pod:

- Click on/select the user(s) to be removed.
- In Attendees pod click top, right pods option menu.
- Choose **Remove Select User** – removes computer and mobile attendees.

* Doesn't ask for confirmation, immediately removes selected individuals!



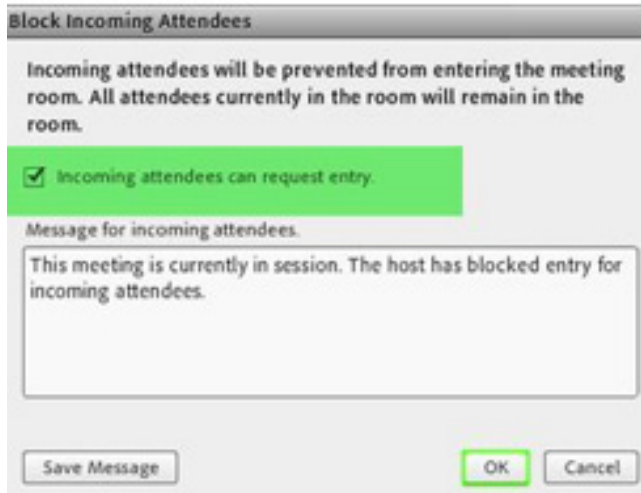
Block Student(s) From Session

The host can go further and block a student from joining again:

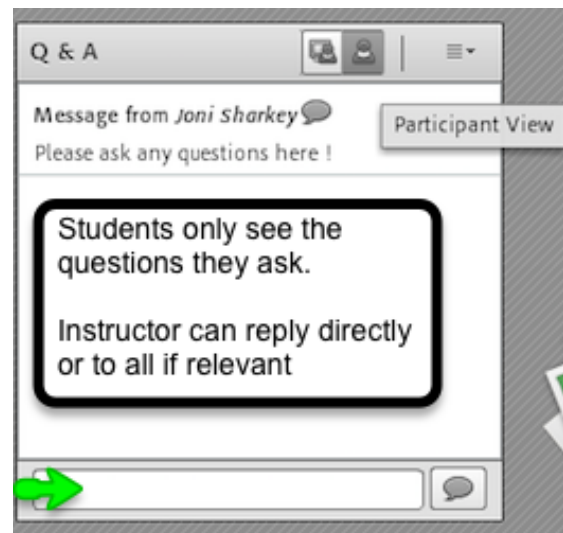
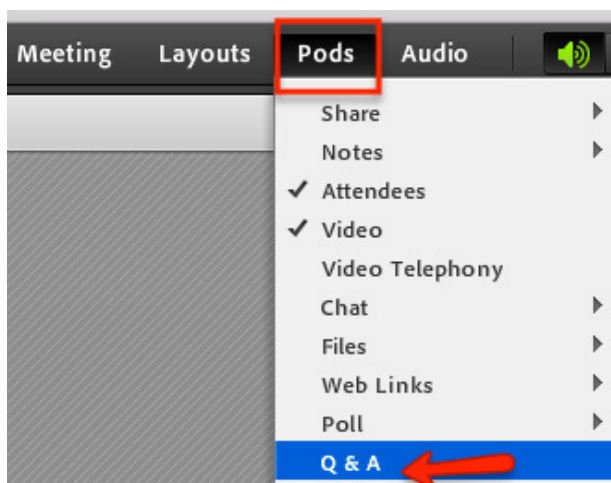
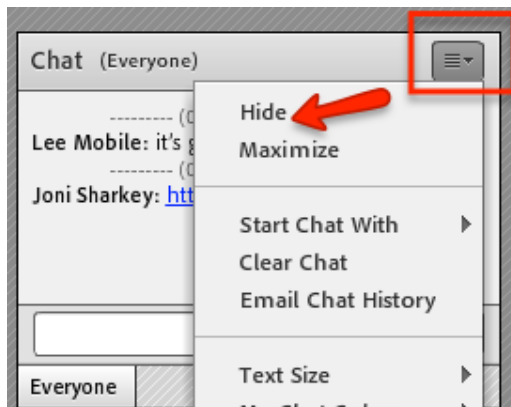
- Click on **Meeting/Manage Access & Entry/Block Incoming Attendees**

* It is recommended to enable *Incoming attendees can request entry as a student who*

loses internet connect and needs to come back into the session will also experience this block.

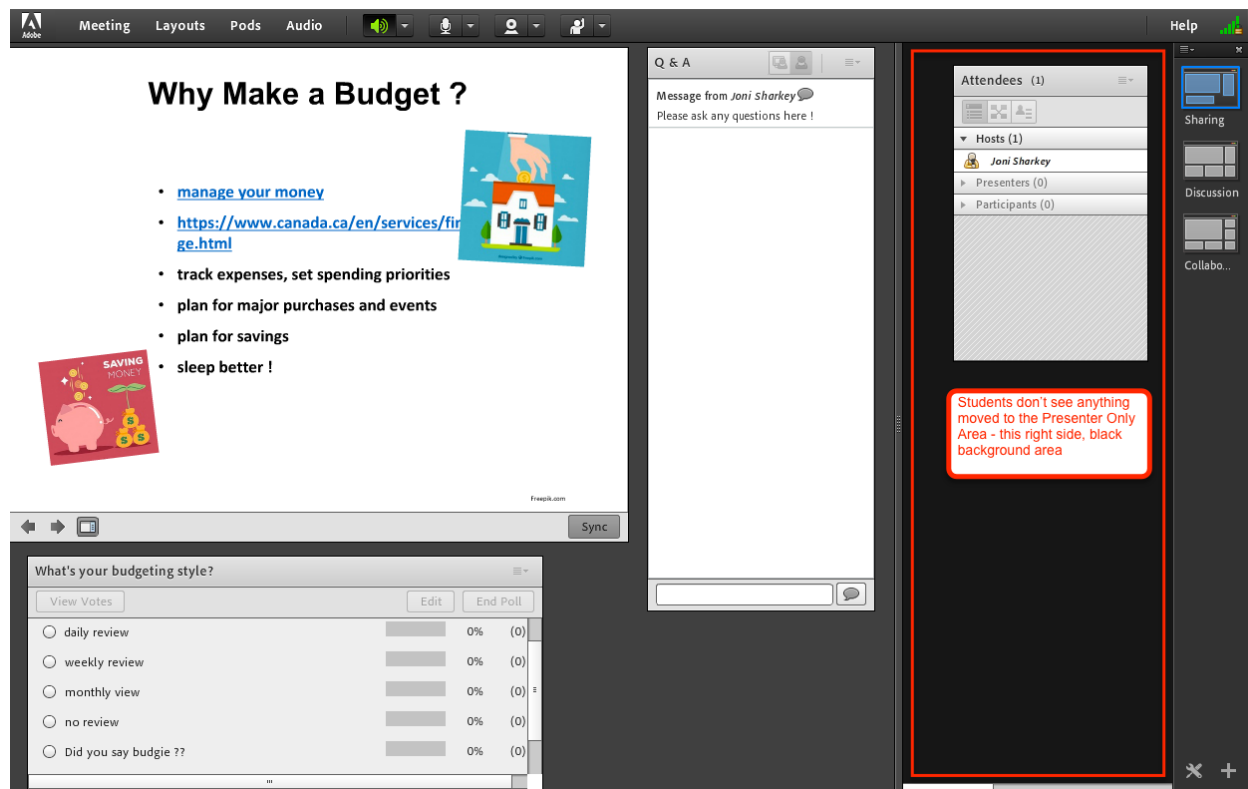
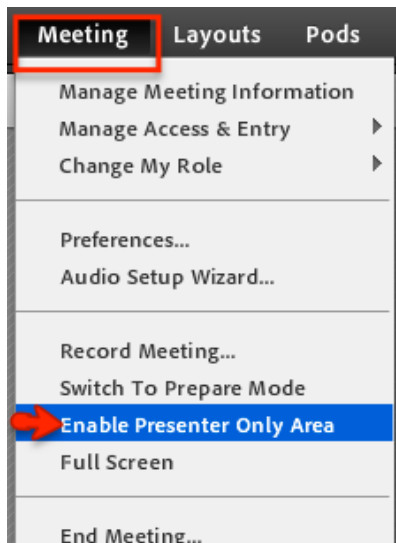


Hide Chat, Use Q & A Pod Instead



Move Attendees Pod to Presenter Only Area

Students don't see anything placed on or moved to the Presenter Only Area, This zone, located on the right-hand side of the session, has a black background.



Disable student's microphone, webcam, markup draw tools

