



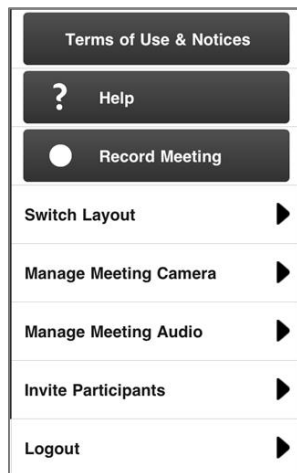
Host Quick Reference Card – Adobe Connect Mobile

Welcome to Contact North | Contact Nord. Use this **Quick Reference Card** to help you use the Host and Presenter capabilities of the Adobe Connect Mobile app on your iPad or Android tablet*. Please refer to [Participant Quick Reference Mobile](#) to learn how to log in to your session and about the general features of the Adobe Connect Mobile app.

For technical assistance, contact: Contact North | Contact Nord Technical Support Hotline 1-888-850-4628.

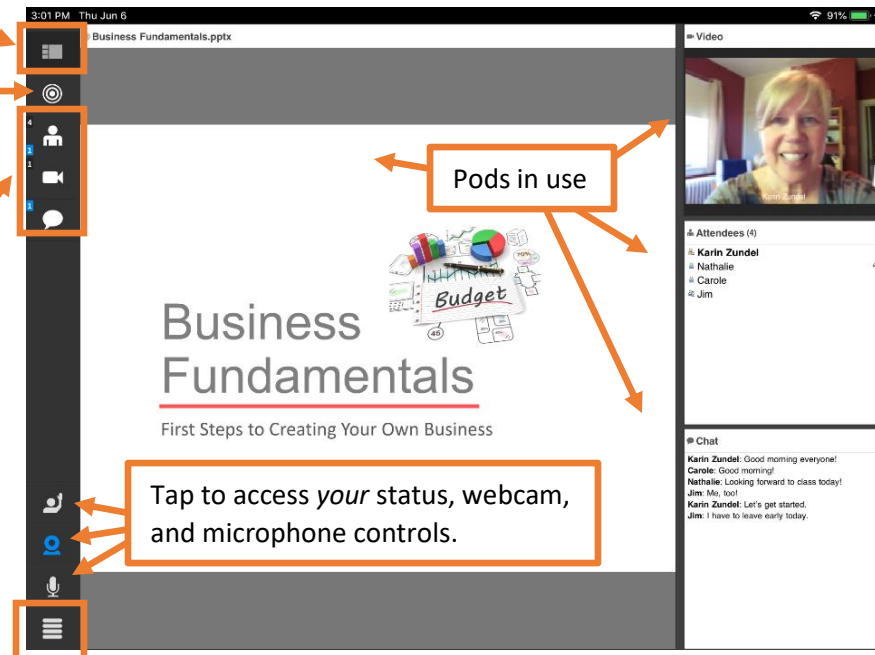
Once logged in, you will see an **overview** of the pods currently in use in the meeting. **You cannot add new pods or layouts from the mobile app.**

Tap the Share pod directly or tap the target icon to view content in **full screen**.

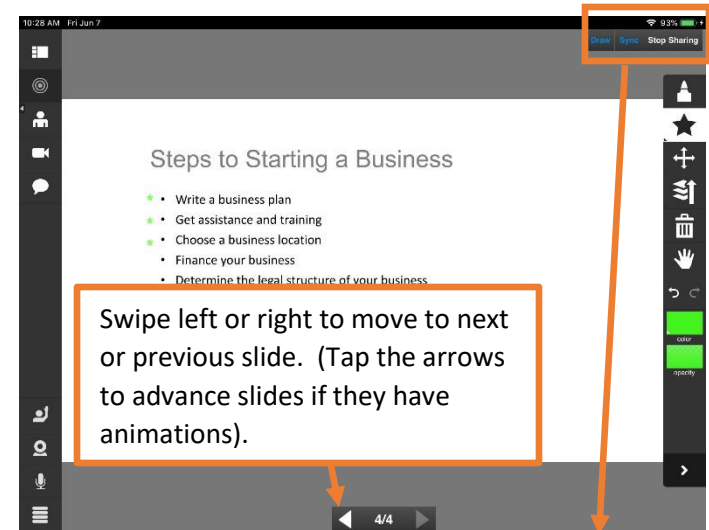
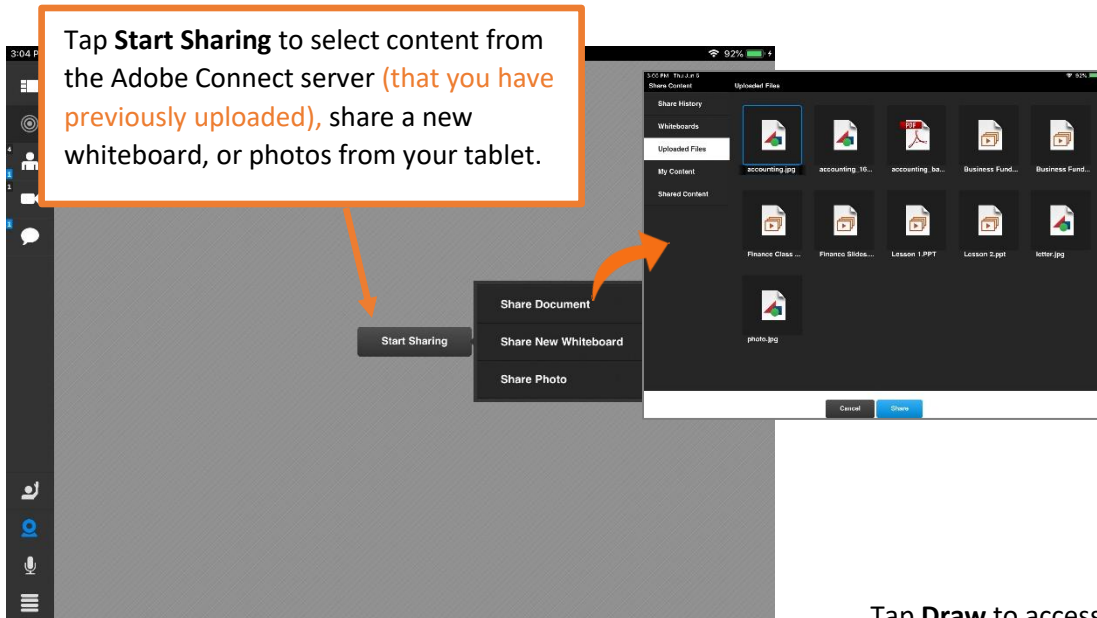


Tap a pod directly, or tap its icon, to access **pod options** (these will vary depending on device used).

Access **meeting options** menu by tapping the icon in the lower left corner. See next page for details.



* The Adobe Connect Mobile app is also available for iPhone and Android phones, however the host and presenter capabilities are not as robust.



Tap **Draw** to access markup tools. Tap **Sync** to disable synchronization of slides. Tap **Stop Sharing** to close the current content.

